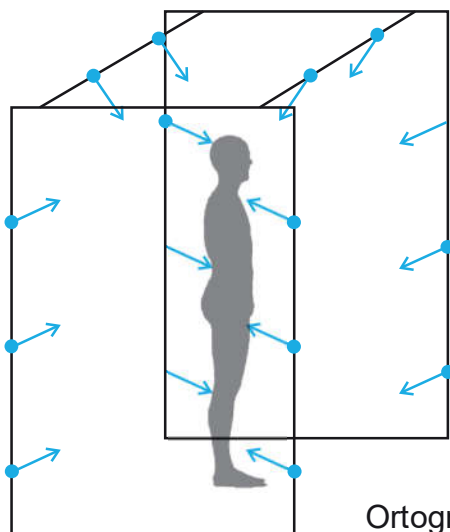
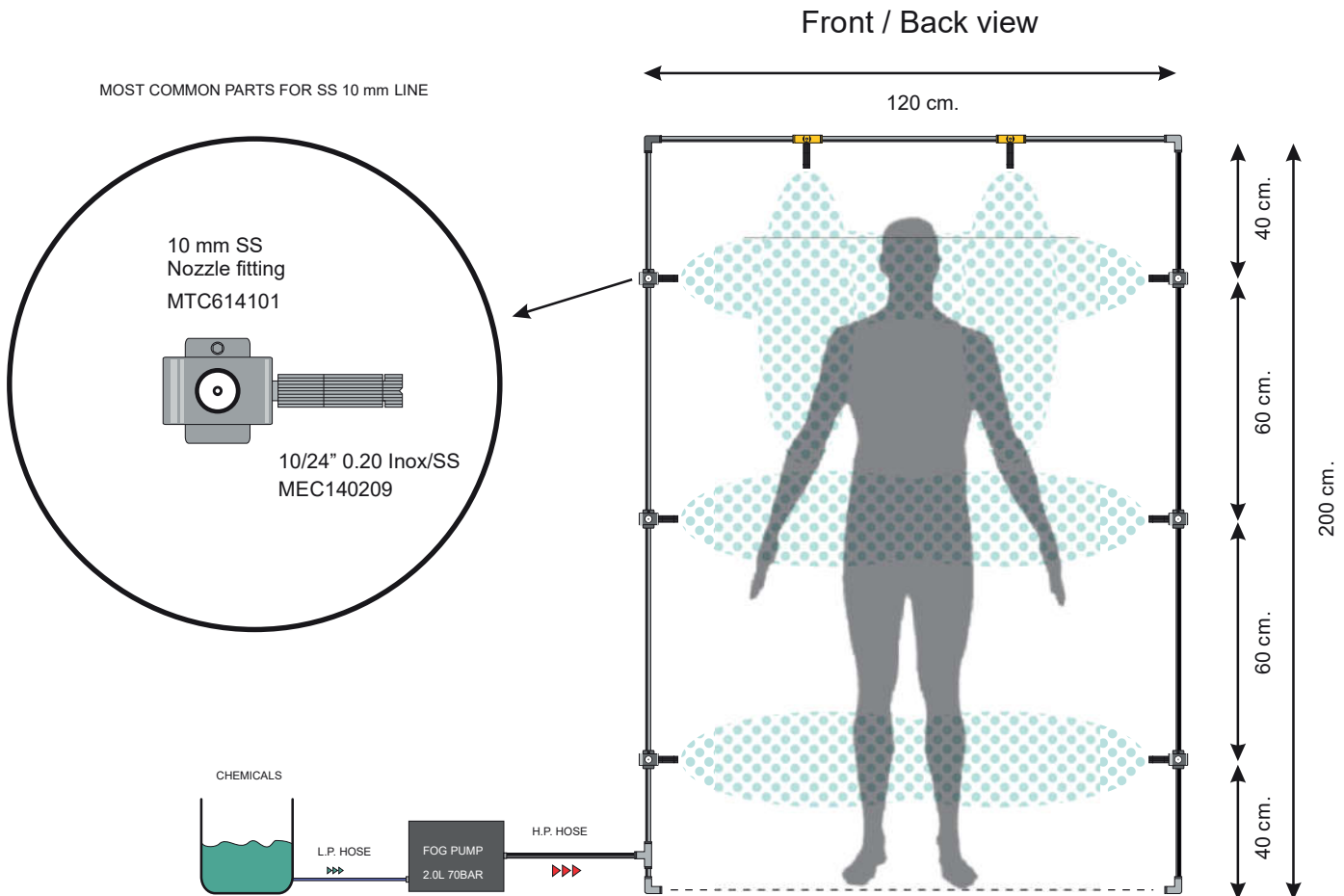


# Disinfection & Decontamination

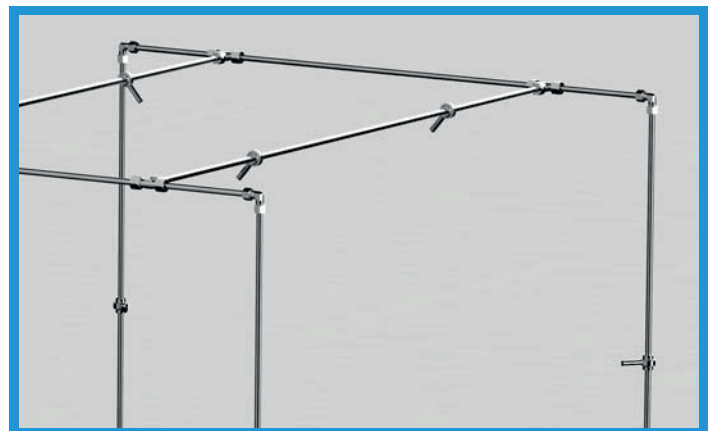


## DISINFECTION/DECONTAMINATION SYSTEM

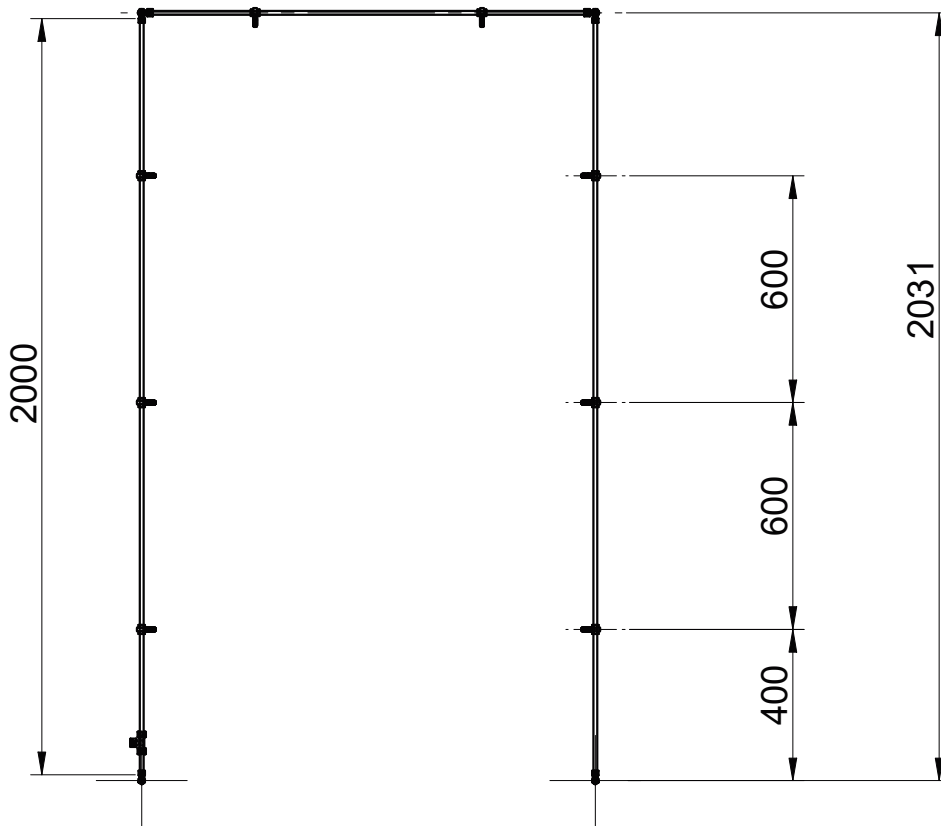
Mounting layout example S.Steel line  
Pump : Evolution-Time KEM or DeltaKEM



Orthographic projection



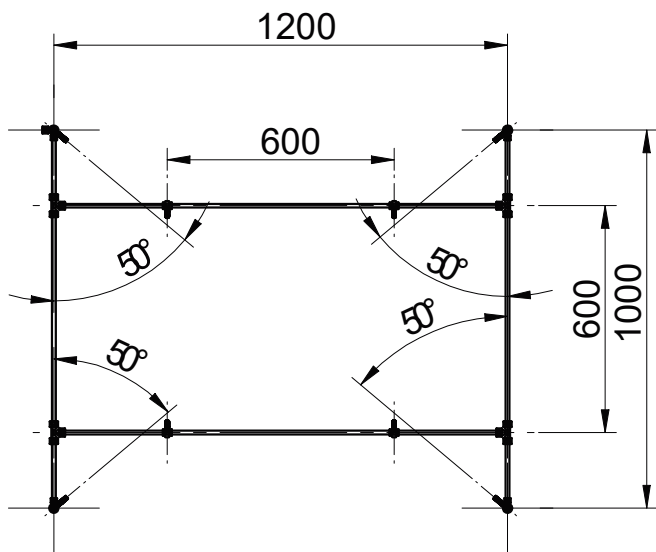
Mounting detail



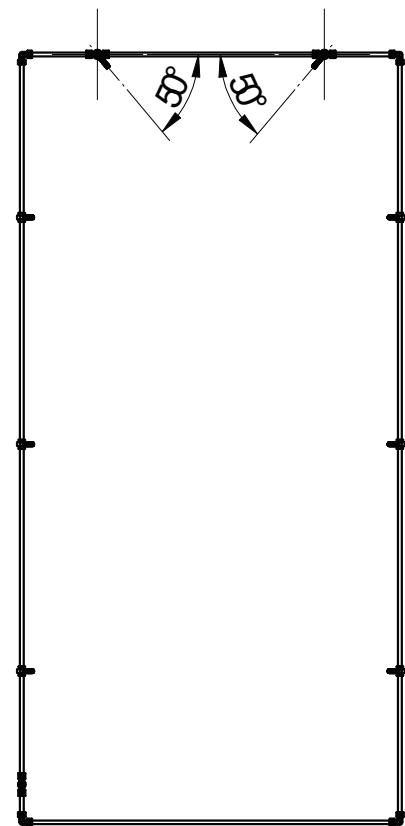
Front/Back view

Standard dimensions

Systems design and dimensions are fully customizable. Check pages 46-48 on our catalog for the complete range of pipes, fittings, accessories.



Top view



Left/Right sides view

## MOBI-COOL KEM

### Portable high pressure misting fan

MOBI-COOL is a stand-alone, high-pressure, low-noise misting fan KEM with built-in pump and chemical tank

Thanks to the built-in pressurization system, MOBI-COOL is capable KEM of mixing atomized to the airflow, thus producing a liquids disinfection effect all around.

Finally! without fixed installations. MOBI- A portable disinfection system COOL is really a special quiet, effective, fully KEM atomizing fan, autonomous with a high capacity tank that guarantees autonomy. a great MOBI-COOL is quiet, its electrical QES motor an pump are KEM low noise, less than 65 DB noise emission technology , thanks to a low consumption designed for applications in environments requiring low noise emissions.

#### TECNICAL FEATURES

- professional high pressure pump with aluminium head
- working pressure: 70 bar
- 3 heavy duty ceramic pistons
- variable flow rate, built-in by-pass
- safety valve
- heavy duty self-ventilated industrial motor
- thermal overload protection
- 60 liters (15.85 Gallons ) water tank
- OFF/FAN-ON/FAN AND MISTING ON switch
- weight balanced, wheels and handle for easy displacement
- electric float switch level controller to protect pump against dry running
- manufactured in compliance with CE regulations

#### USES

Gardens, parks, verandas, beaches, public places, bars, restaurants, hotels, swimming pools, sport events, parties, factories, warehouses, shopping malls, discoteques, ceremonies, and any other area to be cooled.

Fill the tank, connect the plug, switch on. in a while a powerful flow of atomized liquid will be able to cover floors, objects, goods and tools with a veil of sanitizing product without wetting them excessively

BPS: all units are equipped with By-Pass System (built-in by-pass valve), recirculating the water inside the pump, lowering overheating risk.

Fog systems driven by BPS fog pumps do not require any drain valves to empty the pipeline so that no water is wasted on the ground.

QES: units supplied with QES low noise motors (Quiet Engine System) offer low consumption and ensure great reliability.

**Super Quiet Engine!  
Less than 55 dB(A)**

- Easily transportable
- Lowers temperature
- Absorbs dust and PM10!



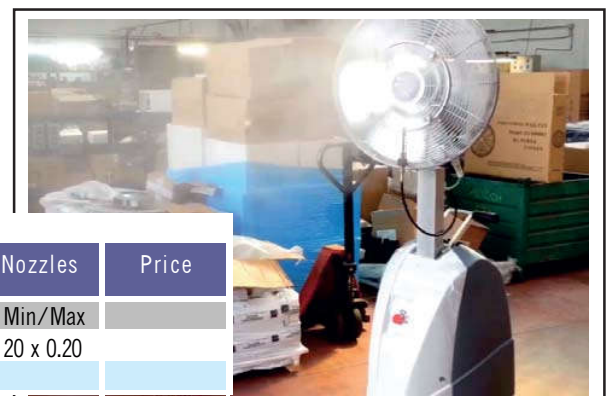
Dimensions: WxHxP 580x2050x580 mm  
Weight: 50 Kg (empty water tank)



#### Mobi-Cool KEM 1450

Code	Pressure		Output		Power		Running time	Volt	Nozzles	Price
	Bar	psi	l/m	gpm	W	A				
MTC600090	70	1000	1.60	0.42	590	2.9	37	230	20 x 0.20	

MobiCool KEM 1450 with 4P motor, 1450 RPM, noise level 65dB (average)



## EVOLUTION "TIME" KEM series for the DUST and ODOR suppression

EN These series of professional high pressure pumps are the suitable solution with high quality and safety standard for all requirements to build professional misting systems for dust and odor suppression or sanitizing by chemicals spreading. Pump parts are made by oxidation resistive materials like Nickel, Brass, Stainless Steel, Aluminium, Viton, assuring troubleless operation and long durability. Our built-in digital timer offers full control of the efficiency of the fogging system by direct adjustment of the frequency of mist spray increasing the advantages on water and energy consumption with savings up to 70%. QES electrical motors assure the full efficiency with lowest power consumption and low noise operation. QES units are the best solution for applications where noise is a matter of disturb. BPS internal drain system avoids to waste water and chemicals during drain cycles. Flow rates ranging from 1 to 6 l/min, singlephase electric motor.

Misting pump 70bar - 1000psi  
from 8 to 75 nozzles  
230V or 120V - 50 or 60Hz



Evolution Time KEM

### TECHNICAL FEATURES

- professional high pressure pump, **nickel head**
- **Viton**® seals
- 3 **heavy duty ceramic coated** plungers
- working pressure 70 bar
- variable flow rate, built-in bypass
- safety valve
- glycerin filled pressure gauge
- 2 in line mounted solenoid 230V-50Hz
- heavy duty industrial motor, single phase 2.0 HP, 1450 RPM, self ventilated
- ON-OFF switch and thermal overload protection
- 3 functions programmable cyclic digital timer
- weatherproof steel skid cover on antivibration rubber feet
- pressure switch to protect pump against dry running
- noise level: 60 dB(A) (average)
- manufactured in compliance with CE regulations

Oxidation/Chemical resistive:  
· NICKEL pump head  
· VITON seals

**QES:** units supplied with QES low noise motors (Quiet Engine System) offer low consumption and ensure great reliability.

**BPS:** all units are equipped with By-Pass System (built-in by-pass valve), recirculating the water inside the pump, lowering overheating risk. Fog systems driven by BPS fog pumps do not require any drain valves to empty the pipeline so that no water is wasted on the ground.

**TIME:** all units supplied with digital timer allow to modulate the operation of the system, regulating the mist spray according to day-night cycles and therefore saving energy and water, obtaining an optimal ambient temperature.



**qes**  
Quiet Engine System

**bps**  
Water Cooled Pump

**time**  
Energy Saver Timer

### EVOLUTION TIME KEM - 230V 50Hz or 60Hz - 1450 RPM

Code	Pressure		Nozzles*		Output lpm		Output gpm		Power		Price
	bar	psi	50Hz	60Hz	50Hz	60Hz	50Hz	60Hz	W	Ah (50Hz)	
MEC308056	70	1000	8 - 12	10 - 15	1	1.2	0.26	0.32	550	2.8	
MEC308050	70	1000	20 - 30	24 - 36	2.5	3	0.66	0.79	720	3.3	
MEC308058	70	1000	30 - 40	36 - 48	3	3.6	0.78	0.95	815	3.7	
MEC308051	70	1000	40 - 50	48 - 60	4	4.8	1.06	1.27	900	4.1	
MEC308052	70	1000	50 - 75	60 - 90	6	7.2	1.59	1.90	1250	5.7	

Dimensions: L 490 w. 410h. 300 mm  
Weight: 33 Kg.

\* 0.20 mm (0.008") Nozzles

## DELTA KEM S.Steel Series S.S. pump for aggressive chemicals

These series of professional high pressure pumps S.Steel are the suitable solution with high quality and safety standard for all requirements to systems 1 /min build professional misting 5 liters flow rate . with Misting systems single-phase electric motor assembled with these pumps and our S.Steel pipes and fittings are capable of spraying a wide variety of aggressive chemicals. Our built-in digital controller allows to operate an automatic drain valve and to monitor water supply and working pressure. SSC safety features avoid accidental flooding by stopping the pump in case of leakages.

Misting pump 70bar - 1000psi  
from 55 to 65 nozzles  
230V or 120V - 50 or 60Hz



DELTAKEM S.Steel

Oxidation/Chemical resistive:  
· S.steel pump head  
· VITON seals

### TECHNICAL FEATURES

- heavy-duty high pressure pump
- 3 ceramic plungers, S.Steel head
- working pressure 70 bar
- safety valve
- high pressure S.Steel solenoid drain valve 24V DC
- S.Steel inlet solenoid valve 24V DC
- drain hose
- high pressure switch
- heavy duty ventilated industrial motor single-phase 3 HP, 1450 RPM
- ON-OFF switch
- digital display controller
- S.Steel skid on antivibration rubber feet
- low noise
- automatic switch-off if dry running is detected
- automatic switch-off if no pressure (leakage) is detected
- manufactured in compliance with CE regulations

SSC: System Safety Control shuts down the pump in the event of the pressure dropping below 40 bar preventing flooding caused by broken tubing. It also prevents pump from dry running. A reliable solution for 24H safe operating systems.



OPTIONAL  
S.Steel frame

OPTIONAL  
S.Steel pump

### DELTA SS KEM - 230V 50Hz or 60Hz - 1450 rpm

Code	Pressure		Nozzles*		Output lpm		Output gpm		Power		Price
	bar	psi	50Hz	60Hz	50Hz	60Hz	50Hz	60Hz	W	A (50Hz)	
MTC307315	70	1000	55 - 65	66 - 78	5	6	1.32	1.58	1780	7.1	

**SSC**  
System Safety Control

Dimensions: 1 950 w. 550h. 450 mm  
Weight: 35.Kg

\* 0.20 mm (0.008") Nozzles

Residential Cooling  
Commercial Cooling  
Industrial Cooling  
Livestock Cooling  
Greenhouse Cooling  
AC Pre Cooling  
Humidification

Dust Suppression  
Odor Control

Special Effects



MISTEC, Inc.  
2381 Rosecrans Avenue Suite 350  
El Segundo, CA 90245, USA  
Phone : +1 805 263 4530

Skype : mistingsystems  
info@mistec-inc.com  
www.mistec-inc.com